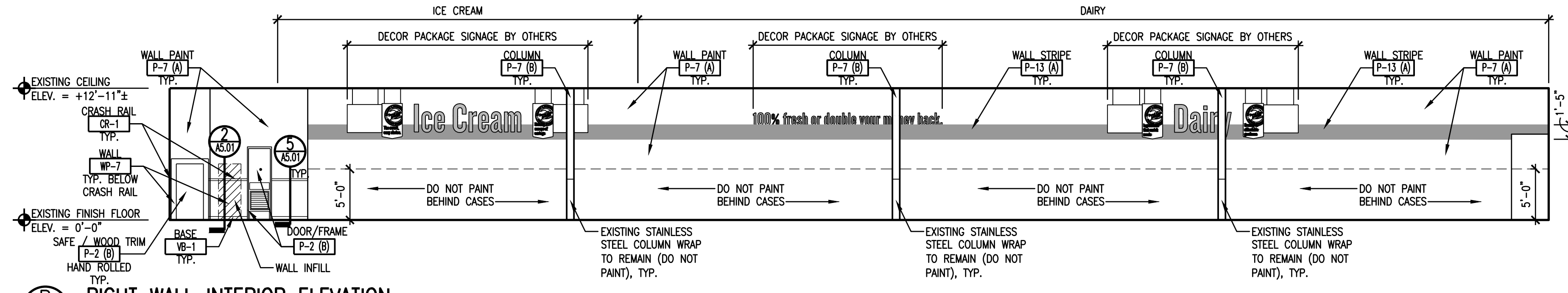
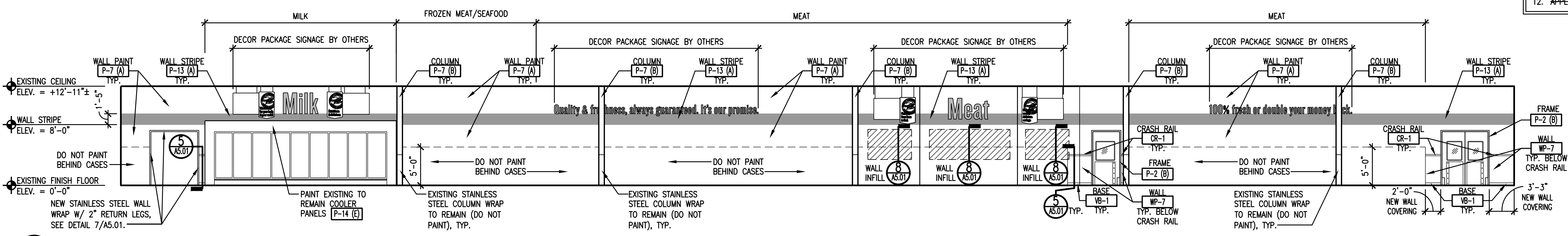


A FRONT WALL INTERIOR ELEVATION
1/8" = 1'-0"

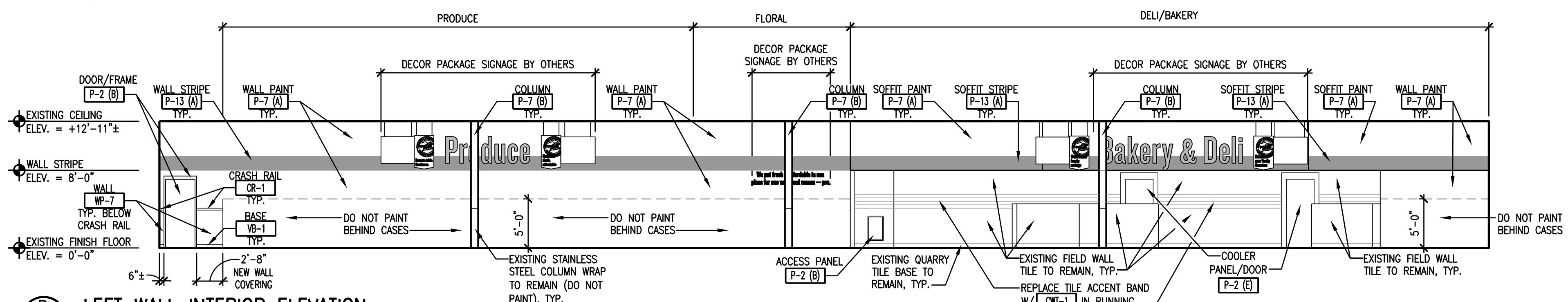
- GENERAL NOTES:**
- GENERAL CONTRACTOR SHALL INSTALL CONTROL JOINTS IN NEW GYPSUM BOARD WALL FINISH IN SALES AREA AS INDICATED OR AS REQUIRED BY GWB MFR. AT A MINIMUM, JOINTS SHALL BE 30'-0" O.C. PROVIDE SLIP JOINTS AT CHANGES IN STRUCTURAL SUPPORT.
 - ACCESSIBLE SIGNAGE SHALL BE PROVIDED FOR THIS PROJECT TO IDENTIFY THE ACCESSIBLE ELEMENTS IN ACCORDANCE WITH ICC/ANSI A117.1- 2017 CHAPTER 7.
 - ALL PAINT COLORS AND FINISH MATERIALS SHALL BE VERIFIED BY THE FOOD LION CONSTRUCTION MANAGER PRIOR TO ORDERING. IF THIS IS NOT DONE, THE REPAINTING COST WILL BE THE GENERAL CONTRACTOR'S RESPONSIBILITY.
 - GC TO RELOCATE ALL EXISTING EXPOSED CONDUIT ON WALL SURFACES ON FRONT WALL OF SALES AREA. RELOCATED CONDUIT TO BE PLACED IN FURRING SPACE BEHIND GWB. PATCH AND REPAIR GWB AS NECESSARY.
 - ALL EXISTING MARLITE IN SALES/CUSTOMER FACING AREAS IS TO BE REMOVED AND REPLACED WITH NEW WALL PANELS. SEE FINISH SCHEDULE.
 - ALL EXISTING WOOD TRIM NOT SHOWN IS TO BE REMOVED, VERIFY WITH THE FOOD LION CONSTRUCTION MANAGER.
 - REFER TO SHEET A6.01 FOR FINISH MATERIAL/COLOR LEGEND.
 - REFER TO SHEET A1.04 FOR CEILING, SOFFIT & STRUCTURE PAINT INFORMATION.
 - DO NOT PAINT EXISTING OR NEW STAINLESS STEEL TRIM.
 - REMOVE AND REINSTALL EXISTING STAINLESS STEEL CORNER GUARDS AND WALL MOUNTED TRIM AS REQUIRED TO INSTALL NEW FINISHES, TYP.
 - ALL NEW WALL TILE SHALL RECEIVE SCHLUTER QUADRO-1/4" SQUARE EDGE CORNER GUARD ON ALL OUTSIDE CORNERS UNLESS MATCHING EXISTING.
 - APPLY STAINLESS CORNER GUARD TO EXPOSED CORNERS UP TO 4' A.F.F.



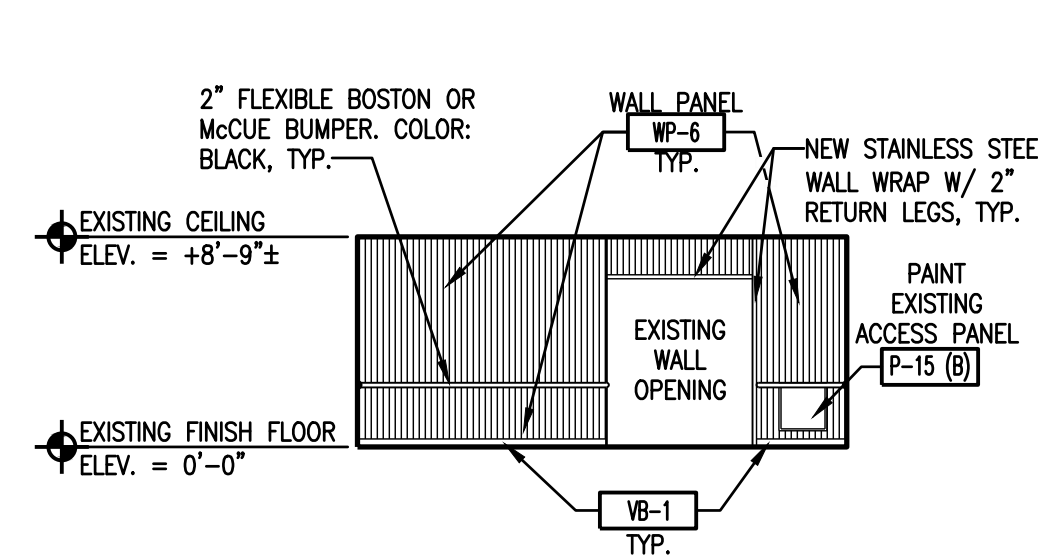
B RIGHT WALL INTERIOR ELEVATION
1/8" = 1'-0"



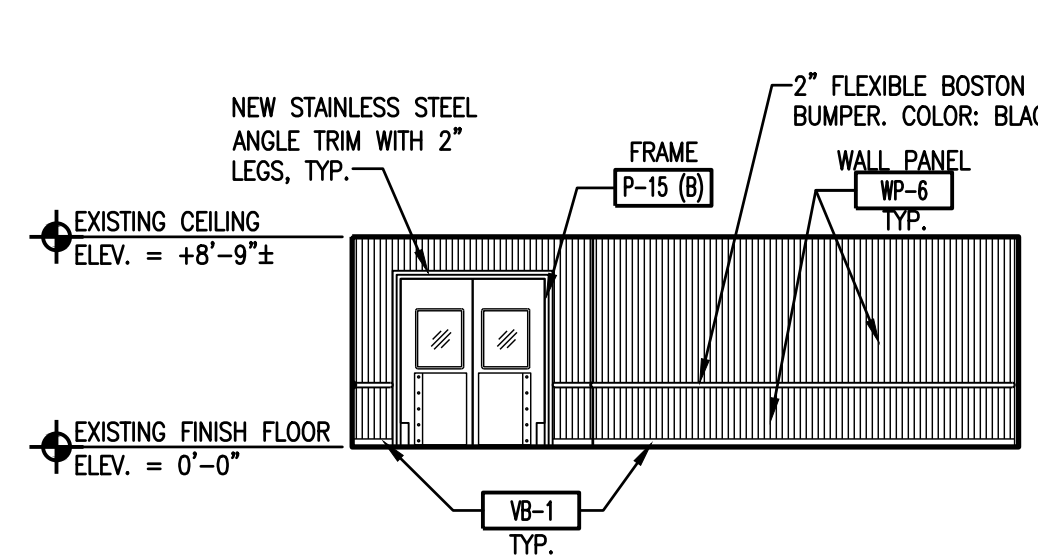
C REAR WALL INTERIOR ELEVATION
1/8" = 1'-0"



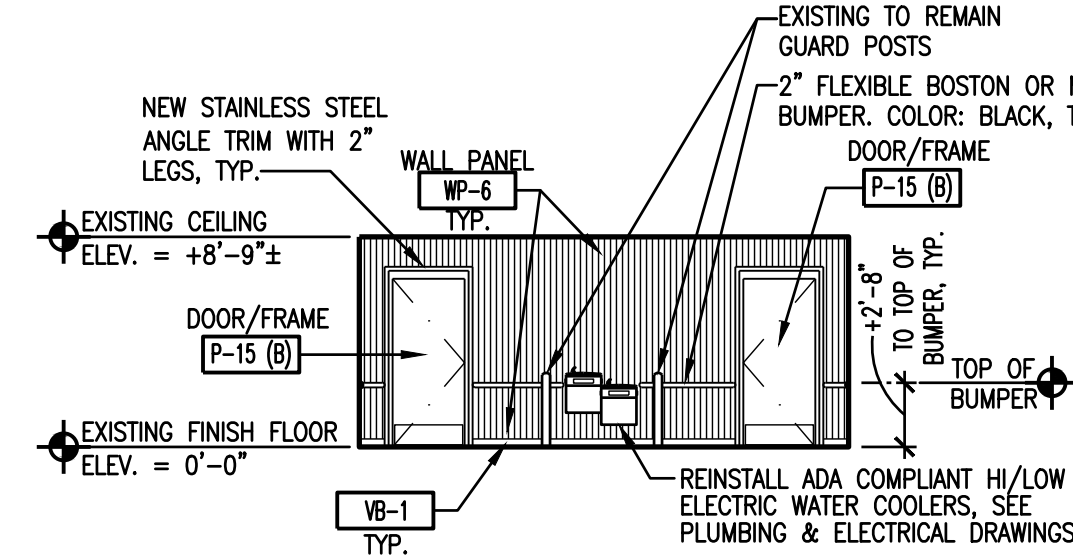
D LEFT WALL INTERIOR ELEVATION
1/8" = 1'-0"



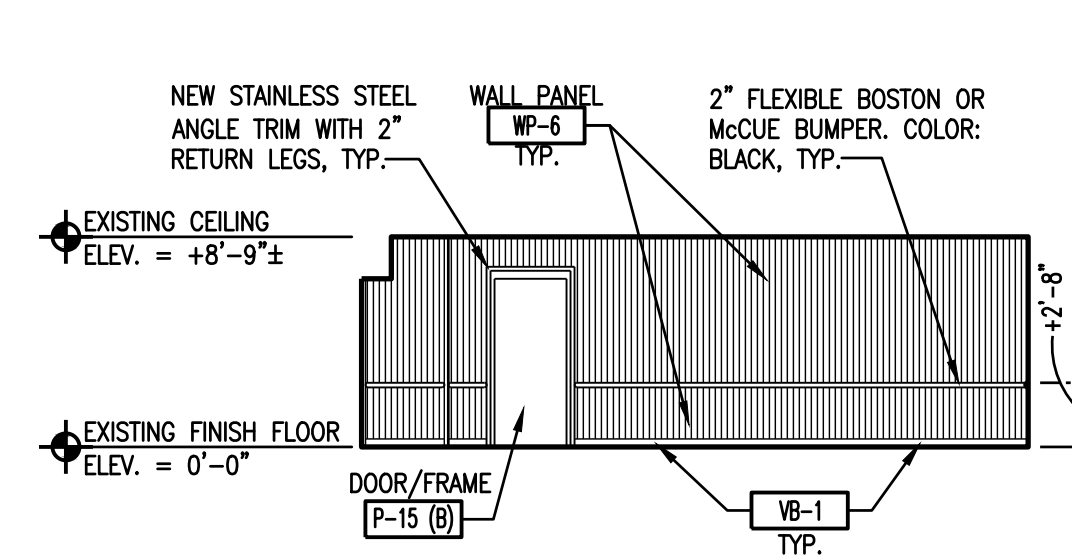
E CORRIDOR FRONT WALL INTERIOR ELEVATION
1/8" = 1'-0"



F CORRIDOR LEFT WALL INTERIOR ELEVATION
1/8" = 1'-0"



G CORRIDOR REAR WALL INTERIOR ELEVATION
1/8" = 1'-0"



H CORRIDOR RIGHT WALL INTERIOR ELEVATION
1/8" = 1'-0"